

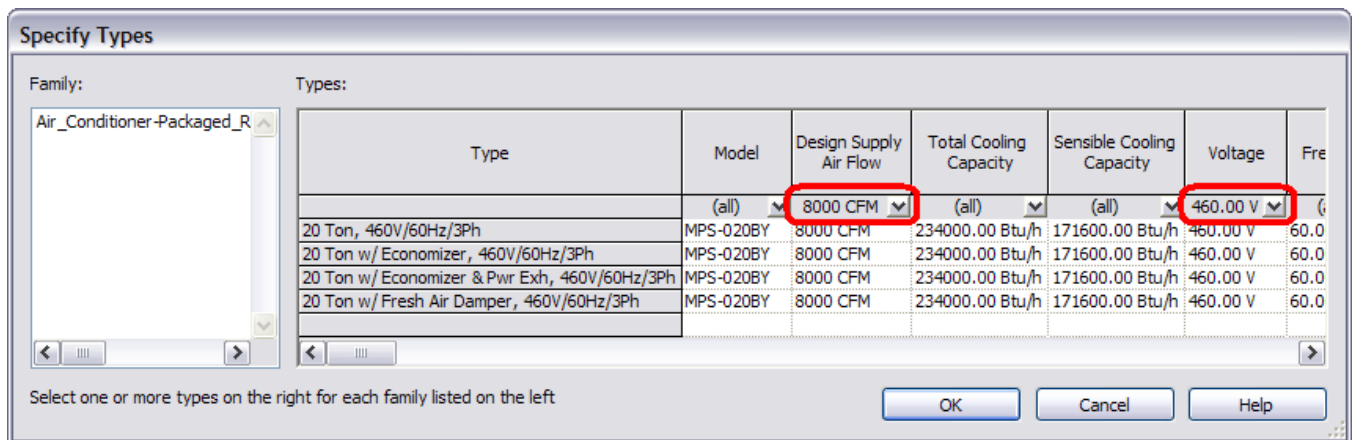
Correctly Loading Revit® Families That Use Type Catalogs

Most Daikin and McQuay Revit families make use of type catalogs. Type catalog usage appears to be getting more prevalent with other manufacturers as well.

When a family has a type catalog TXT file with the RFA file, before the family is loaded into your project a “Specify Types” dialog appears.

Type catalogs provide Revit users with several important benefits:

1. **Data Preview:** *Before loading anything into your project*, you can see if you are loading a family file with types in it that will work for you. If the family won’t work for you, just click on the Cancel button, and your project remains untouched.
2. **Filtering:** You can use the filtering mechanism to quickly narrow down a long list of types into a shorter list that is easier to evaluate. In this example, applying two filters reduced a list of 48 types to just four:

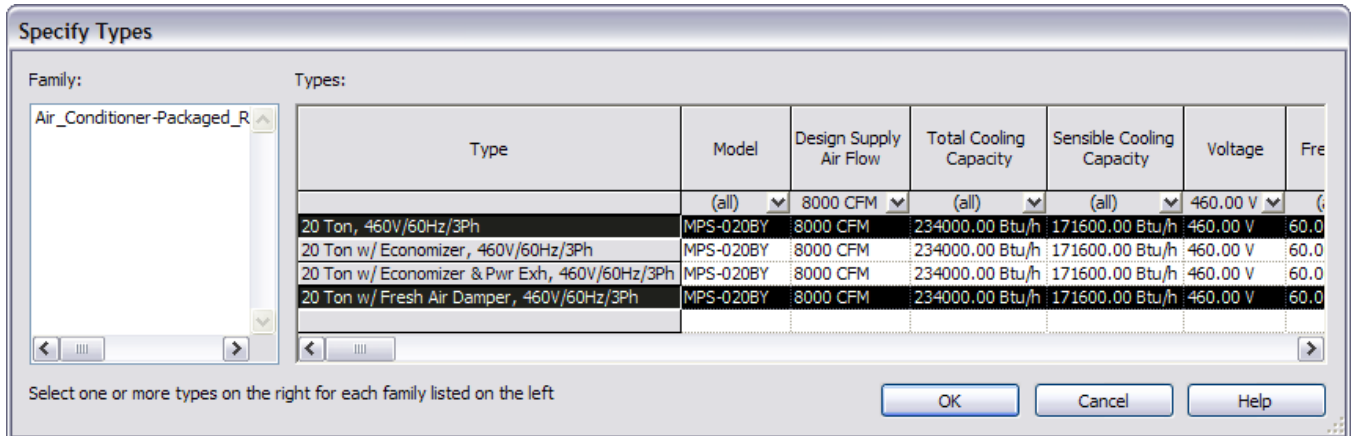


3. **Specific Type Selection:** You can select only the individual types of interest to load into your project. In the above example, without a type catalog you’d have to wait while loading all 48 definitions into your project, even if you only needed to have a single type defined in your project.

By only loading the type definitions you need, you save time and you keep Revit running as fast as possible.

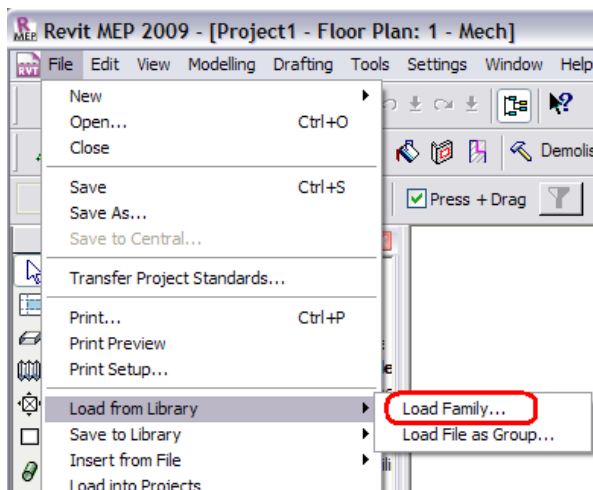
IMPORTANT: You must actually click on the individual type(s) to load so their background turns black to load them. Just filtering down to the last one will not load that type definition.

In the example below, of the 48 types defined for this family, only the two definitions shown in black (without economizers) will actually be loaded into the project file.

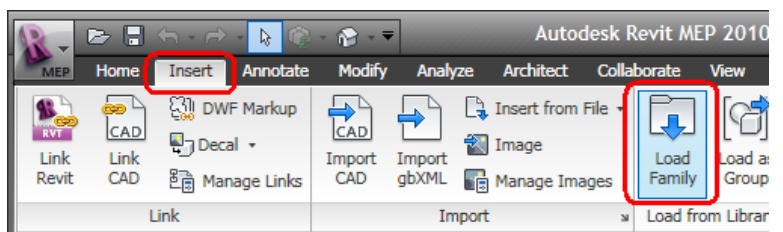


IMPORTANT: Family files that use type catalogs are not compatible with being dragged-and-dropped into a project. You must use the “Load Family” technique.

Revit 2009



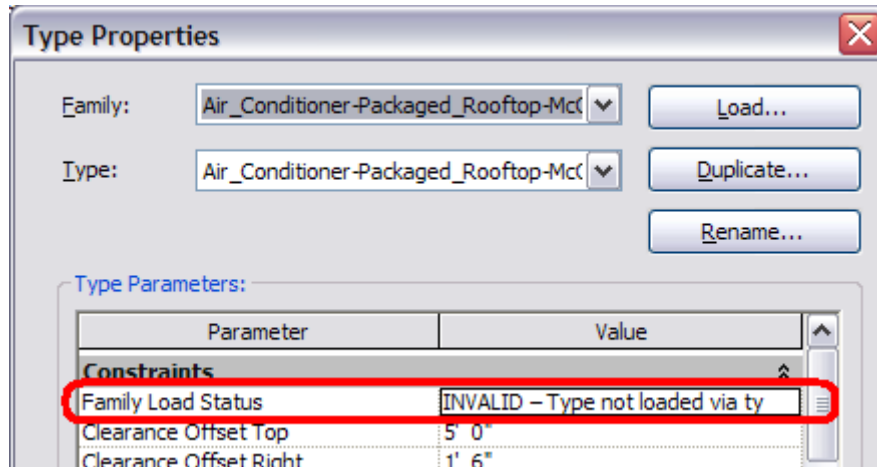
Revit 2010



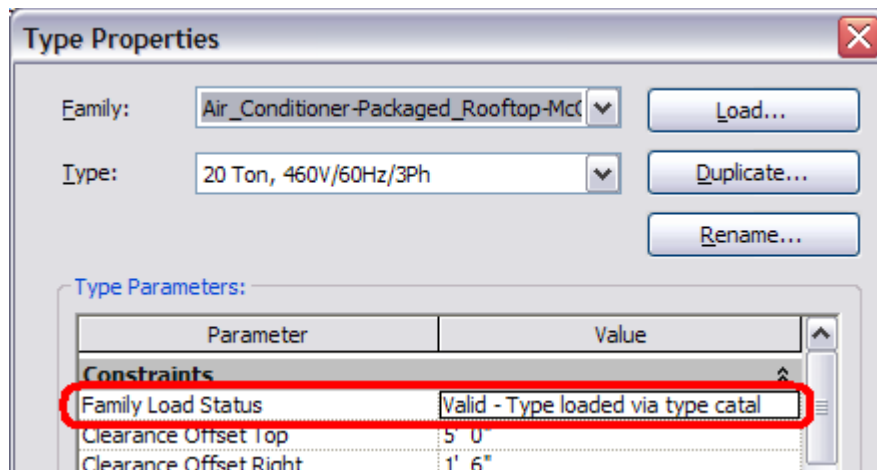
Using the right-click/Reload... option on a family file listed in the Project Browser *will* work for a family that uses a type catalog.

For Daikin and McQuay families that use type catalogs, the “Family Load Status” parameter will show you whether or not the family was loaded correctly:

Incorrectly Loaded Family



Correctly Loaded Family



Also for Daikin and McQuay families, a tip that the family may not be loaded correctly is that when first placed into a project the clearance volume will be turned off.

For most Daikin and McQuay families, the clearance volume is visible by default when first placed in a project.